

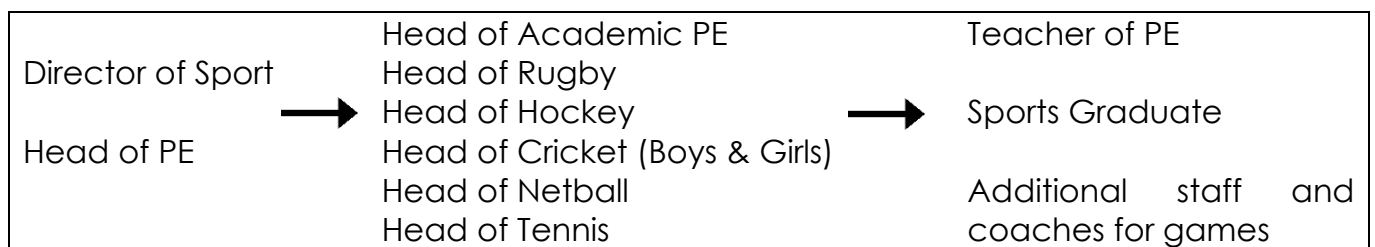


## PE and Games Department Information

The PE and Games Department is committed to providing pupils with healthy and enjoyable educational experiences in as many activities as possible in the hope that they will pursue their interests through participation outside school and into later life.

At LGS there are 880 pupils, ranging from 10 years old in Prep to 18 years in the Upper Sixth Form. All pupils from Prep to year 11 receive a double period of Physical Education and all students receive a Games afternoon each week consisting of three periods.

PE and Games enjoy a very high profile within the school, and Academic PE is delivered very successfully at both GCSE and A-level. We are a large team with 8 full-time and 3 part-time specialists, and a Sports Graduate.



Leicester Grammar School teams are highly respected and enjoy considerable success both within the County and in National competitions. Teams from all age groups are regular winners of County Championships. Pupils of outstanding sporting ability graduate to centres of excellence and academies of sport - both locally and nationally. A large number of pupils represent Leicestershire in a wide range of sports, and regularly achieve selection at Midlands and International level. Sporting Tours are often offered.

Core PE is taught in co-educational groups, using a varied and ambitious spiral programme.

The major games are Rugby, Hockey, Netball, Cricket, Tennis and Athletics and there is considerable scope for the development of individual interests across the full range of sporting activity.

The school has extensive facilities, which can be seen on the school's website [www.leicestergrammar.org.uk](http://www.leicestergrammar.org.uk).

